

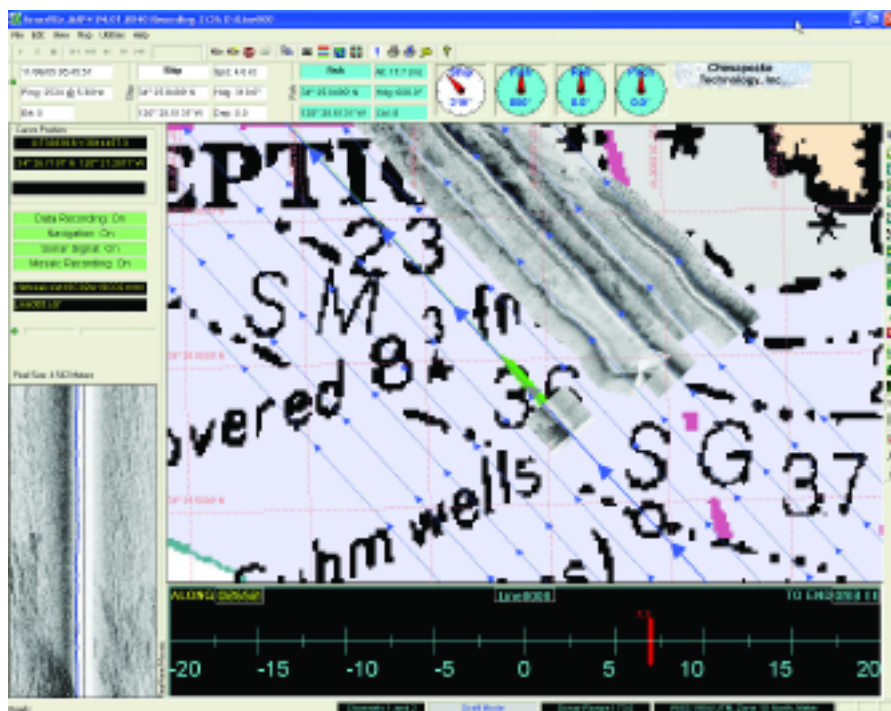
SonarWiz.MAP: the fastest, friendliest acoustic mapping package available.

SonarWiz.MAP produces real-time mosaics and post-processed mosaics, at any resolution and size, quickly and on-the-fly.

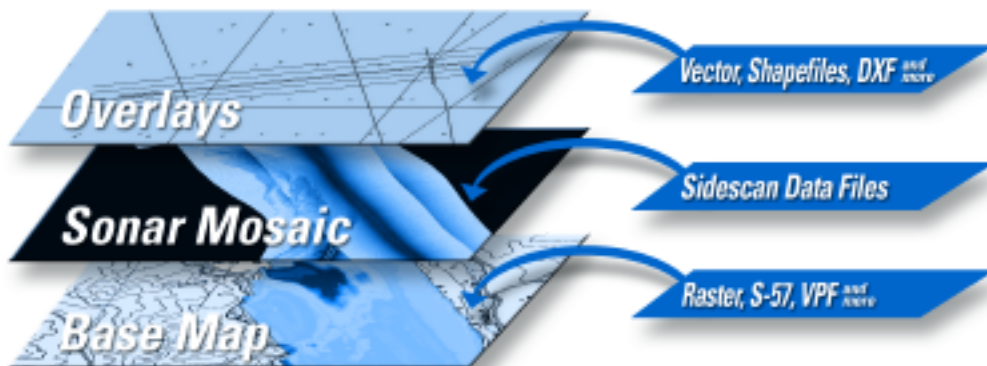
In real-time acquisition mode, it supports most sonar systems, in addition to navigation, fathometer and magnetometer input.

In post-processing mode, it will handle most of the common sidescan and sub-bottom data file types as well as S-57, VPF, BSB, GeoTiff and many more charting, GIS and CAD formats.

Runs on Windows 2000, XP or later



SonarWiz.MAP Display Capabilities



Chesapeake

Technology Inc.

650.967.2045

www.chesapeaketech.com

SonarWiz.MAP:

Interactive visualization tools such as zoom, pan, measure and on-the-fly image scaling make **SonarWiz.MAP** an indispensable tool for sonar mosaic production and interpretation.

Contact identification and feature digitizing tools allow features to be located and classified on the mosaic during or after data acquisition. Graphic, tabular and application specific files (HTML, MS Word, ESRI Shapefiles) provide multiple data export routes. Basemaps (raster images) and overlays (vector files) add visual context and perspective to the mosaic.

Software Features...

- ➔ Real time data acquisition and display: supports most sonar systems, plus navigation, fathometer and magnetometer input.
- ➔ Real-time and post processed sonar mosaic production.
- ➔ Real-time survey-line generator, editor and steering indicator makes line following a breeze.
- ➔ Real-time QC-sonar waterfall display.
- ➔ Interactive and on-the-fly scaling.
- ➔ Sonar file importing: supports most sonar file formats.
- ➔ Comprehensive selection of pre-defined geodetic datums, coordinate systems and map projections, plus support for user defined datums and projections.
- ➔ Basemap support for any georeferenced JPEG, TIFF or BMP image.
- ➔ Vector map overlays using ESRI Shapefiles.
- ➔ Bottom Tracker: manual and automatic modes.
- ➔ Comprehensive signal processing and gain control including Beam Angle Correction, Destriping, Non-linear per-channel TVG, AGC, layback.
- ➔ On-screen feature digitizing and attribution.
- ➔ Target capture and reporting.
- ➔ On-screen tools simplify difficult tasks such as adjusting survey lines.
- ➔ Printed output to any Windows supported printer or plotter.
- ➔ Output mosaics to GeoTiff (TIF/TFW) with user specified resolution.
- ➔ Output digitized features and reports to ESRI shapefiles, AutoCAD DXF, and simple ASCII files.
- ➔ Full online HTML help system.
- ➔ Unmatched customer support.
- ➔ Yearly Maintenance Agreement available for extended upgrade and support options.

Also available with Sub-Bottom profiler option.



Chesapeake Technology, Inc.
1146 Kathy Way
Mountain View, CA 94040 USA

voice: 650.967.2045

fax: 650.961.6734

sales@chesapeaketech.com

www.chesapeaketech.com