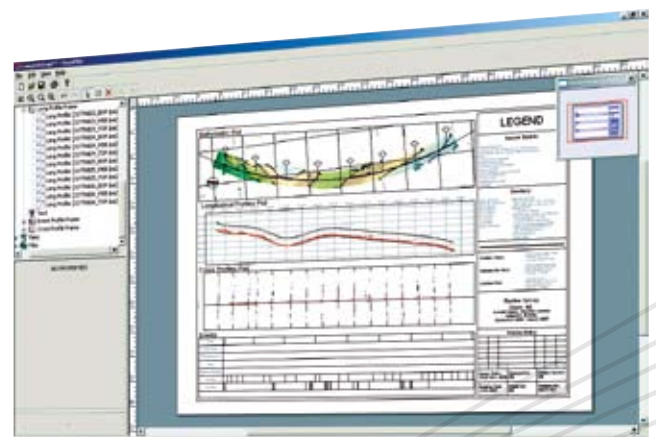
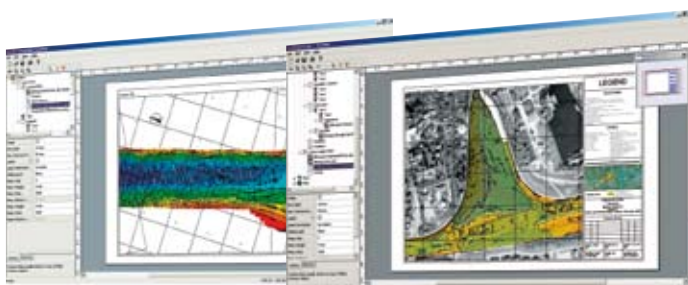


SOFTWARE FOR LAYOUT AND CHARTING OF FAIRSHEETS RELATING TO ALL YOUR MARINE SURVEYS – PAR EXCELLENCE

- **Layout generator**
- **Survey legends**
- **XY plots**
- **Cross and longitudinal profiles**
- **Pipeline and event charts**
- **AutoCAD import/export**
- **Export to S57 chart format**
- **Prints to any Windows supported printer/plotter**

NaviPlot provides easy and professional layout of survey data on fairsheet for printing on any Windows supported printer or plotter.



LAYOUT

The fairsheet layout is performed by definition of frames with one primary frame being the outer frame of the paper. New frames are created and resized by use of the mouse. The frames are organized in a tree structure, so that every frame, except the main frame, has a parent frame. Any frame layout can be stored as default template for later retrieval.

The fair sheet comprises a variety of objects and data types. The mixing of map data in different frames as well as sorting of objects allows prioritized presentation of important objects. All objects are controlled through a set of properties which can be inherited by underlying objects. Existing object properties are easily changed by entering new properties.

NaviPlot operates with map views being a frame containing XY plots of the survey data. All objects are added to map views providing options for stacking, property editing, disabling/enabling of object display, etc. Additional information like tagged text, XY grid, scale bar, north arrow and color palette, is easily inserted into the map views.

All frames allow overlay with XY-, Lat/Long- or geographic grid displayed as either lines or ticks. Labels can be applied aligned to the frame edges and can be hidden if they overlap other labels.

NaviPlot utilizes a chart definition function (layout manager), which allows pre-definition of along route layouts. Project definition and modification associated with each individual chart is stored in a project file. Overview of those modifications is available in the project tree.

DATA FORMATS

A vast number of formats are supported for import as well as export of data, comprising among others:

- **Contour curves**
- **Profiles**
- **Run-lines and way-points**
- **Display lines**
- **Bathy plot**
- **Coverage data**
- **Trackplot**
- **NaviPac event profiles**
- **AutoCAD DXF/DWG**
- **Geo-coded image files**
- **S57 charts via SevenCs**

PLOTS

The final chart plot can be printed on Windows® compatible printer/plotter, saved as complete charts including data and layout and exported to AutoCAD. Data plots can be defined in any data unit (metric, US-survey feet, etc.) independent of the selections made during data collection.

