

# *Proteus 1000 ROV*

- **3.5 Millimeter Tether Diameter - Maximum Control**
- **On-board Rechargeable Battery – Safety/Portability**
- **User Intuitive GUI Controls – Easy, Understandable**
- **3 Year Warranty - Industry Leading Supportability**



**Proteus ROVs** are ideal for small boat and platform operations where a single operator, quick launch is required.

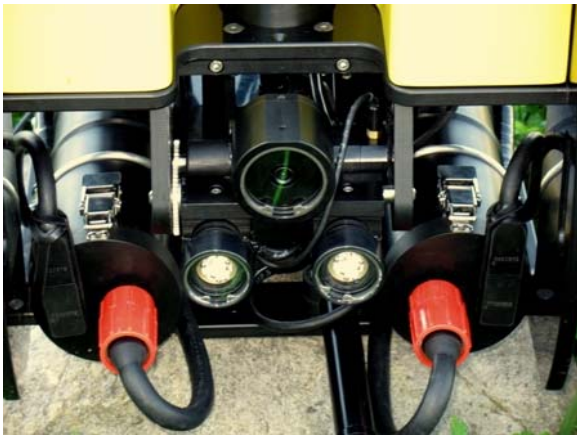
The open architecture design enables you to define your ROV capabilities by adding only those options that your mission requires.

All controls are via a laptop PC including the GUI interface which provides a unique, intuitive control panel screen with Proteus operational status, video, sensor data as well as joystick control configuration.

If safety, performance & affordability are important to you, call us today and let us build an ROV just for you backed by the best warranty in the industry.



# Proteus ROV Specifications



## STANDARD SYSTEM

### VEHICLE

Size  
Weight  
Depth rating  
Rechargeable Batteries

### THRUSTERS

### CAMERA and LIGHT TILT BAR

### TETHER

### TETHER DEPLOYMENT

### CONTROL SYSTEM

### WARRANTY

## PROTEUS 1000

28 in L x 16 in W x 16 in H  
(71 cm L x 41 cm W x 41 cm H)  
~90 lbs (41 kgs)  
1000 ft (305 m)  
6-8 hours nominal

1/4 H.P. standard  
2 forward, 1 vertical, 1 horizontal  
24 ft-lbs forward thrust  
Forward speed ~ 3.0 knots

One camera and two Ultra Brite LED lights on a rotating camera and light bar. 180+ degrees of tilt, Rov will accept up to 4 cameras and 4 lights. .0003 lux B&W or .2 lux color

One 1000 ft (305 m)  
3.5 mm diameter  
Breaking strength 1000 lbs (454 kgs)

Optional

Control software for your PC, Operations manual, Joystick hand controller, Graphical user interface; time, date, depth, pressure, temperature, compass heading, & video

3 year limited

## OPTIONS

### VEHICLE

Sled for additional payload  
Top side power  
Additional battery capacity

### THRUSTERS

Each 8.6 ft lbs thrust  
Each 1/4 hp brushless  
Each 1/3 hp brushless

### LIGHTS

Low wattage halogens  
Super Brite LED

### TETHER

Sections up to 2000 ft (610 m)  
in 500 ft (152 m) increments

### TETHER DEPLOYMENT SYSTEM

Reel / optical slip ring

### CONTROL SYSTEM

Standard or ruggedized laptop

### MAINTENANCE KIT

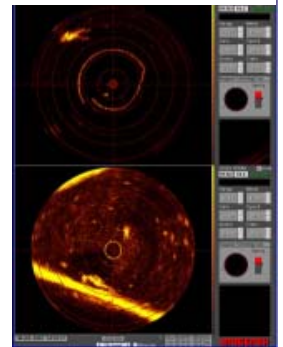
O-rings, fuses, lamp bulbs

### CAMERAS

B&W .0003 lux, 90 degree FOV,  
Sony HAD EX view CCD  
Color .5 lux, 92 degree FOV, 520 lines, CCD  
Color .2 lux, 53 degree FOV, 350 lines, CCD  
Other options available

### OTHER ACCESSORIES

Multiple Sonar  
Manipulator Arm  
Sensors (various types)  
GPS Tracking



Specifications are subject to change without notice. Copyright 2008 Hydroacoustics, Inc. Printed in USA.

999 Lehigh Station Road • Henrietta, New York 14467  
Phone (585) 359-1000 • Fax (585) 359-1132  
[www.hydroacousticsinc.com](http://www.hydroacousticsinc.com)