

## RxMobile

*RxMobile is an intuitive, portable GUI field controller for use with the PolaRx2/2e family. Delivered on an iPAQ or RECON handheld computer, RxMobile allows you to control your PolaRx2/2e Receiver, monitor the navigation solution and access its functions in the field in the same intuitive way you have become used to with RxControl. Fitted with an optional GSM/GPRS module, it can also relay RTK corrections from a base station or network to a connected PolaRx rover.*



Powered by the Windows® Mobile® 5.0 operating system, it includes standard Microsoft® application software and supports a variety of other specialized application software for multiple purposes.

### Easy to connect

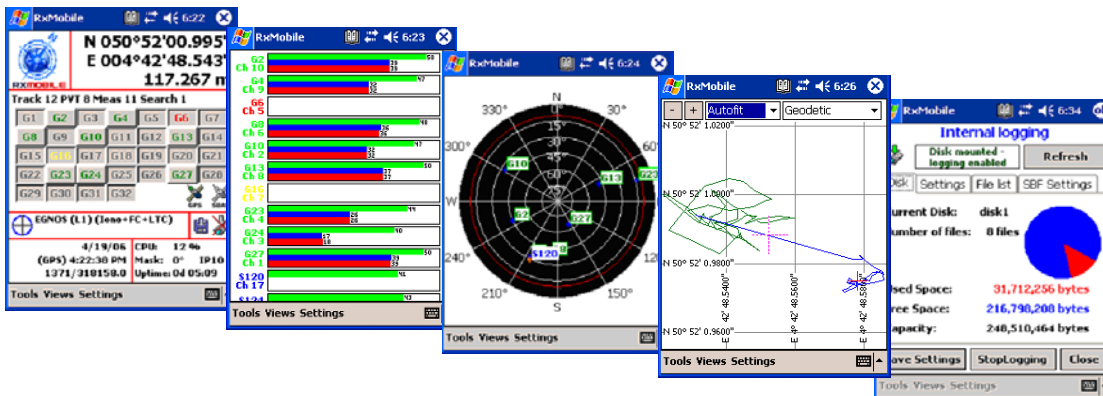
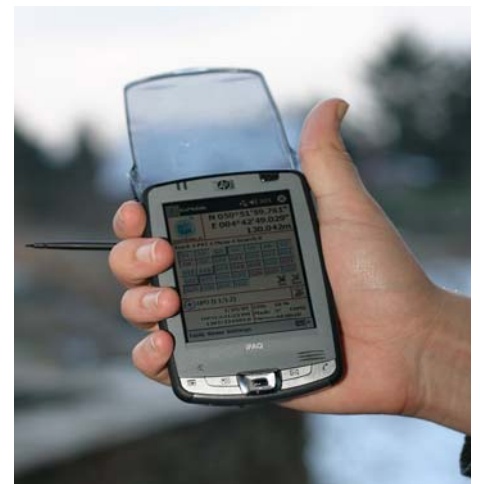
With the optional Bluetooth® adapter on your PolaRx2/2e receiver (available from Septentrio for certain models), you can connect wirelessly to your receiver.

### Intuitive Field Controller

RxMobile is an easy-to-use graphical field controller for all PolaRx2/2e GPS/SBAS receivers. With a look and feel similar to the PC-based RxControl, it provides access in the same intuitive way to all functions of the receiver. Implemented on a powerful Windows® Mobile® 5.0<sup>1</sup> computer, RxMobile is combined with the software suite from Windows®. Setting up, verifying the output, logging data or using any other capability of your PolaRx2/2e receiver in the field has never been easier.

### Powerful platform

RxMobile controllers are available on different high-performance Intel Xscale™-based platforms: the latest very small and lightweight HP iPAQ platform, or the extremely rugged and waterproof Recon controller. Both platforms feature 64 MB RAM, a large and crisp colour display/touch screen, an extension slot for Compact Flash data card, and many more features. With the new functionality Modem/Data Link, you can get differential corrections via an optional built-in GSM/GPRS modem for cm level positioning.



<sup>1</sup> Windows Mobile 2003 Second Edition and Windows CE 4.2 also supported

# RxMOBILE TECHNICAL SPECIFICATIONS

## RxMOBILE ON IPAQ

### Hardware Platform

Processor	Intel PXA270 XScale CPU @ 312 MHz
Memory	192 MB total memory (up to 80 MB user available)
Display	240 x 320 pixel (¼ VGA) colour TFT with LED backlight
Touch Screen	TFT
Keyboard	5-way navigation button, 4 application buttons Onscreen soft keyboard

### Physical

Size	12 cm x 7.5 cm x 1.6 cm
Weight	165 g
Battery	920 mAh Li-Ion

### Environmental

Operating Temperature	0 to 40°C
Storage Temperature	-20 to 60°C
Humidity	90% RH

### Input/Output

Serial	RS-232 via HP standard 22-pin cable interface
Bluetooth	Version 1.2

### Operating System and Software

Operating System	Microsoft Windows Mobile™ 5.0
------------------	-------------------------------

### RxMobile Application Software

Microsoft Application Software  
Pocket Word, Pocket Excel, Pocket Internet, Calendar, Contacts, Tasks, Notes, Calculator, Windows Media Player, Microsoft Pictures, Explorer, Inbox (with Spell Checker for email), File Explorer, Terminal Services Client, VPN Client, Infrared Beaming, Clock, Align Screen, Memory, Voice Recorder, Volume control



## RxMOBILE ON RECON

### Hardware Platform

Processor	Intel PXA255 XScale CPU @ 400 MHz
Memory	64 MB high-speed SDRAM Onboard nonvolatile NAND flash 128 MB
Display	240 x 320 pixel (¼ VGA) colour TFT with LED front light
Touch Screen	TFT
Keyboard	10 Keys Onscreen soft keyboard

### Physical

Size	16.5 cm x 9.5 cm x 4.5 cm
Weight	490 g
Battery	incl. rechargeable Power Boot 3800 mAh NiMH

### Environmental

Operating Temperature	-30 to 60°C
Storage Temperature	-40 to 70°C
Humidity	MIL-STD-810F, 507.4

Sand & Dust IP67  
Water MIL-STD-810F, 510.4 (Proc. I, II)  
IP67, sealed against accidental immersion (1m, 30 min)

Drop MIL-STD-810F, 512.4 (Proc I)  
Vibration MIL-STD-810F, 516.5 (Proc IV)

Altitude MIL-STD-810F 514.5 (Proc I)

Altitude MIL-STD-810F, 500.4 (Proc I, II, III)

### Input/Output

Serial	Standard 9-pin male D-shell RS-232 serial port
Bluetooth	version 1.2

### Operating System and Software

Operating System	Microsoft Windows Mobile™ 2003 Second Edition
------------------	-----------------------------------------------

### RxMobile Application Software

Microsoft Application Software  
Pocket Word, Pocket Excel, Pocket Outlook, Calendar, Contacts, Tasks, Notes, Calculator, Desktop version of Outlook, Windows Media Player, Microsoft Pictures, ActiveSync 3.7, Online Help



## FEATURES

### Plots

- Main View
- PVT View
- Carrier Noise Plot
- Sky Plot
- Planimetric Plot

### Settings Screens

- PVT configuration
- Rover configuration
- Base configuration
- SBAS configuration
- Channel configuration

### RxMobile Logging

- Logging on the device

### Internal Logging

- Logging on the receiver

### Dialogs

- Receiver Status

### Command Console

(accepting configuration scripts)

### Modem/Data link functionality

(differential corrections via built-in GSM/GPRS modem)

## POLARX2/2E FAMILY : OTHER PRODUCTS

**PolarX2e and PolarX2e\_OEM** - PolarX2e is a versatile dual-frequency GNSS receiver platform for high-end applications. Based on code and carrier tracking of the L1 and L2 signals, it provides the user with satellite range measurements and position, velocity and time.

**PolarX2e\_SBAS** - The single-frequency variant tracks up to 6 SBAS augmentation satellites (such as EGNOS and WAAS) in addition to GPS satellites, offering vital integrity information for application in safety-critical environments.

**PolarX2eH** - A unique single-board dual-frequency dual-antenna receiver - suitable to being connected to 2 dual-frequency antennas, brings heading and machine control applications within economic and practical reach.

**PolarX2e@** - A unique single-board dual-frequency receiver that can be connected to up to 3 antennas, for various heading/attitude and other multi-antenna applications.

**PolarX2C** - The PolarX2C can track up to 4 satellites in L2C mode. For these satellites, the CA, P1, P2 and L2C measurements are available simultaneously.

**RxControl** - RxControl is an intuitive user interface to configure and control all types of PolarX receivers and monitor, log and post data remotely.

SSNDS 04/2006/6